

**CUSTODY DISTRIBUTION OF THE IN-HOUSE POPULATION AND INDIVIDUALS HOUSED TEMPORARILY IN FACILITIES OUT OF STATE**

IN-HOUSE CUSTODY DISTRIBUTION							POPULATION BY CUSTODY LEVEL						CHANGE IN POPULATION BY CUSTODY LEVEL					
DATE	MIN&CT	MED	CLS	MAX	UNA	TOTAL	MIN&CT	MED	CLS	MAX	UNA	TOTAL	MIN&CT	MED	CLS	MAX	UNA	TOTAL
01/31/2015	14.61%	56.05%	23.35%	2.38%	3.61%	100.00%	1875	7193	2996	306	463	12833						0
<b>03/31/2015</b>	<b>14.24%</b>	<b>56.38%</b>	<b>24.32%</b>	<b>2.91%</b>	<b>2.15%</b>	<b>100.00%</b>	<b>1843</b>	<b>7297</b>	<b>3148</b>	<b>377</b>	<b>278</b>	<b>12943</b>	<b>-32</b>	<b>104</b>	<b>152</b>	<b>71</b>	<b>-185</b>	<b>110</b>
10/31/2015	14.94%	55.41%	24.44%	3.07%	2.15%	100.00%	1968	7298	3219	404	283	13172	125	1	71	27	5	229
11/30/2015	15.49%	56.51%	22.76%	3.04%	2.20%	100.00%	2059	7509	3025	404	292	13289	91	211	-194	0	9	117
<b>12/31/2015</b>	<b>14.86%</b>	<b>56.85%</b>	<b>24.55%</b>	<b>3.03%</b>	<b>0.71%</b>	<b>100.00%</b>	<b>1980</b>	<b>7575</b>	<b>3271</b>	<b>404</b>	<b>95</b>	<b>13325</b>	<b>-79</b>	<b>66</b>	<b>246</b>	<b>0</b>	<b>-197</b>	<b>36</b>
02/29/2016	15.36%	56.95%	22.59%	3.04%	2.05%	100.00%	2049	7595	3013	406	273	13336	69	20	-258	2	178	11
<b>03/31/2016</b>	<b>16.05%</b>	<b>58.12%</b>	<b>20.91%</b>	<b>2.97%</b>	<b>1.95%</b>	<b>100.00%</b>	<b>2176</b>	<b>7880</b>	<b>2835</b>	<b>402</b>	<b>265</b>	<b>13558</b>	<b>127</b>	<b>285</b>	<b>-178</b>	<b>-4</b>	<b>-8</b>	<b>222</b>
04/30/2016	16.31%	56.47%	22.33%	2.90%	1.98%	100.00%	2222	7693	3042	395	270	13622	46	-187	207	-7	5	64
05/31/2016	16.40%	56.37%	22.52%	2.86%	1.85%	100.00%	2238	7690	3073	390	252	13643	16	-3	31	-5	-18	21
<b>06/30/2016</b>	<b>16.31%</b>	<b>56.24%</b>	<b>22.68%</b>	<b>2.76%</b>	<b>2.00%</b>	<b>100.00%</b>	<b>2231</b>	<b>7694</b>	<b>3103</b>	<b>378</b>	<b>274</b>	<b>13680</b>	<b>-7</b>	<b>4</b>	<b>30</b>	<b>-12</b>	<b>22</b>	<b>37</b>
07/31/2016	16.27%	55.53%	23.46%	2.84%	1.90%	100.00%	2227	7600	3211	388	260	13686	-4	-94	108	10	-14	6
08/31/2016	16.10%	56.20%	22.74%	2.88%	2.09%	100.00%	2205	7699	3115	394	286	13699	-22	99	-96	6	26	13
<b>9/30/2016</b>	<b>15.98%</b>	<b>56.24%</b>	<b>24.73%</b>	<b>2.91%</b>	<b>0.15%</b>	<b>100.00%</b>	<b>2188</b>	<b>7701</b>	<b>3386</b>	<b>398</b>	<b>20</b>	<b>13693</b>	<b>-17</b>	<b>2</b>	<b>271</b>	<b>4</b>	<b>-266</b>	<b>-6</b>
10/31/2016	16.62%	56.01%	24.48%	2.78%	0.11%	100.00%	2282	7689	3361	381	15	13728	94	-12	-25	-17	-5	35
11/30/2016	16.05%	55.79%	24.99%	2.92%	0.25%	100.00%	2210	7680	3440	402	34	13766	-72	-9	79	21	19	38
<b>12/31/2016</b>	<b>16.08%</b>	<b>53.56%</b>	<b>27.35%</b>	<b>2.87%</b>	<b>0.14%</b>	<b>100.00%</b>	<b>2221</b>	<b>7395</b>	<b>3777</b>	<b>396</b>	<b>19</b>	<b>13808</b>	<b>11</b>	<b>-285</b>	<b>337</b>	<b>-6</b>	<b>-15</b>	<b>42</b>
1/31/2017	16.15%	53.27%	27.37%	3.13%	0.08%	100.00%	2220	7324	3763	430	11	13748	-1	-71	-14	34	-8	-60
2/28/2017	16.09%	53.52%	28.66%	1.10%	0.64%	100.00%	2201	7322	3921	150	87	13681	-19	-2	158	-280	76	-67
<b>3/31/2017</b>	<b>16.42%</b>	<b>53.34%</b>	<b>28.59%</b>	<b>1.25%</b>	<b>0.41%</b>	<b>100.00%</b>	<b>2253</b>	<b>7319</b>	<b>3923</b>	<b>171</b>	<b>56</b>	<b>13722</b>	<b>52</b>	<b>-3</b>	<b>2</b>	<b>21</b>	<b>-31</b>	<b>41</b>
4/30/2017	16.48%	53.66%	28.13%	1.58%	0.15%	100.00%	2273	7401	3880	218	20	13792	20	82	-43	47	-36	70
5/31/2017	16.69%	53.26%	28.30%	1.48%	0.25%	100.00%	2306	7358	3910	205	35	13814	33	-43	30	-13	15	22
<b>6/30/2017</b>	<b>16.81%</b>	<b>52.88%</b>	<b>29.02%</b>	<b>1.13%</b>	<b>0.16%</b>	<b>100.00%</b>	<b>2314</b>	<b>7279</b>	<b>3994</b>	<b>155</b>	<b>22</b>	<b>13764</b>	<b>8</b>	<b>-79</b>	<b>84</b>	<b>-50</b>	<b>-13</b>	<b>-50</b>
7/31/2017	16.75%	53.11%	28.43%	1.56%	0.15%	100.00%	2287	7250	3881	213	21	13652	-27	-29	-113	58	-1	-112
8/31/2017	17.09%	52.93%	28.45%	1.49%	0.04%	100.00%	2345	7263	3904	204	6	13722	58	13	23	-9	-15	70
<b>9/30/2017</b>	<b>16.68%</b>	<b>53.25%</b>	<b>28.53%</b>	<b>1.51%</b>	<b>0.03%</b>	<b>100.00%</b>	<b>2279</b>	<b>7277</b>	<b>3899</b>	<b>207</b>	<b>4</b>	<b>13666</b>	<b>-66</b>	<b>14</b>	<b>-5</b>	<b>3</b>	<b>-2</b>	<b>-56</b>
10/31/2017	16.38%	53.72%	28.27%	1.60%	0.03%	100.00%	2230	7316	3850	218	4	13618	-49	39	-49	11	0	-48
11/30/2017	15.83%	53.41%	29.14%	1.57%	0.04%	100.00%	2146	7242	3951	213	6	13558	-84	-74	101	-5	2	-60
<b>12/31/2017</b>	<b>15.54%</b>	<b>52.80%</b>	<b>29.95%</b>	<b>1.69%</b>	<b>0.01%</b>	<b>100.00%</b>	<b>2096</b>	<b>7120</b>	<b>4039</b>	<b>228</b>	<b>1</b>	<b>13484</b>	<b>-50</b>	<b>-122</b>	<b>88</b>	<b>15</b>	<b>-5</b>	<b>-74</b>
01/31/2018	15.47%	53.13%	29.73%	1.63%	0.04%	100.00%	2078	7139	3994	219	6	13436	-18	19	-45	-9	5	-48
2/28/2018	16.05%	53.10%	29.12%	1.68%	0.04%	100.00%	2154	7125	3908	226	6	13419	76	-14	-86	7	0	-17
<b>3/31/2018</b>	<b>16.61%</b>	<b>51.94%</b>	<b>30.15%</b>	<b>1.30%</b>	<b>0.00%</b>	<b>100.00%</b>	<b>2235</b>	<b>6988</b>	<b>4056</b>	<b>175</b>	<b>0</b>	<b>13454</b>	<b>81</b>	<b>-137</b>	<b>148</b>	<b>-51</b>		<b>35</b>
<b>4/30/2018</b>	<b>15.85%</b>	<b>52.22%</b>	<b>30.61%</b>	<b>1.32%</b>	<b>0.00%</b>	<b>100.00%</b>	<b>2123</b>	<b>6996</b>	<b>4100</b>	<b>177</b>	<b>0</b>	<b>13396</b>	<b>-112</b>	<b>8</b>	<b>44</b>	<b>2</b>		<b>-58</b>
5/31/2018	16.32%	53.19%	29.05%	1.39%	0.04%	100.00%	2189	7134	3897	187	6	13413	66	138	-203	10	6	17
6/30/2018	16.29%	53.23%	29.11%	1.38%	0.00%	100.00%	2187	7147	3908	185	0	13427	-2	13	11	-2		14
7/31/2018	16.19%	52.94%	29.45%	1.39%	0.03%	100.00%	2175	7114	3957	187	4	13437	-12	-33	49	2	4	10
8/31/2018	16.25%	52.78%	29.57%	1.40%	0.00%	100.00%	2189	7110	3984	189	0	13471	14	-4	27	2		34
9/30/2018	16.31%	53.40%	29.04%	1.25%	0.00%	100.00%	2199	7199	3915	169	0	13482	10	89	-69	-20		11
10/31/2018	16.31%	52.60%	29.66%	1.43%	0.00%	100.00%	2196	7082	3994	192	0	13464	-3	-117	79	23		-18
11/30/2018	16.23%	55.07%	27.42%	1.30%	0.00%	100.00%	2180	7399	3684	175	0	13436	-16	317	-310	-17		-28
12/31/2018	16.05%	52.97%	29.67%	1.30%	0.00%	100.00%	2153	7104	3979	175	0	13411	-27	-295	295	0		-25
1/31/2019	16.15%	53.39%	29.18%	1.28%	0.00%	100.00%	2154	7122	3893	171	0	13340	1	18	-86	-4		-71
02/28/2019	15.80%	53.70%	29.28%	1.22%	0.00%	100.00%	2103	7145	3896	162	0	13306	-51	23	3	-9		-34
3/31/2019	16.08%	53.70%	28.90%	1.31%	0.00%	100.00%	2141	7148	3847	175	0	13311	38	3	-49	13		5
4/30/2019	16.11%	54.15%	28.34%	1.39%	0.00%	100.00%	2137	7182	3758	185	0	13262	-4	34	-89	10		-49
5/31/2019	16.07%	54.14%	28.45%	1.34%	0.00%	100.00%	2120	7141	3752	177	0	13190	-17	-41	-6	-8		-72

**CUSTODY DISTRIBUTION OF THE IN-HOUSE POPULATION WITHOUT INDIVIDUALS HOUSED TEMPORARILY IN FACILITIES OUT OF STATE**

IN-HOUSE CUSTODY DISTRIBUTION							POPULATION BY CUSTODY LEVEL						CHANGE IN POPULATION BY CUSTODY LEVEL					
DATE	MIN&CT	MED	CLS	MAX	UNA	TOTAL	MIN&CT	MED	CLS	MAX	UNA	TOTAL	MIN&CT	MED	CLS	MAX	UNA	TOTAL
01/31/2015	14.61%	56.05%	23.35%	2.38%	3.61%	100.00%	1875	7193	2996	306	463	12833						
<b>03/31/2015</b>	<b>14.24%</b>	<b>56.38%</b>	<b>24.32%</b>	<b>2.91%</b>	<b>2.15%</b>	<b>100.00%</b>	<b>1843</b>	<b>7297</b>	<b>3148</b>	<b>377</b>	<b>278</b>	<b>12943</b>	<b>-32</b>	<b>104</b>	<b>152</b>	<b>71</b>	<b>-185</b>	<b>110</b>
10/31/2015	14.94%	55.41%	24.44%	3.07%	2.15%	100.00%	1968	7298	3219	404	283	13172	125	1	71	27	5	229
11/30/2015	15.49%	56.51%	22.76%	3.04%	2.20%	100.00%	2059	7509	3025	404	292	13289	91	211	-194	0	9	117
<b>12/31/2015</b>	<b>14.86%</b>	<b>56.85%</b>	<b>24.55%</b>	<b>3.03%</b>	<b>0.71%</b>	<b>100.00%</b>	<b>1980</b>	<b>7575</b>	<b>3271</b>	<b>404</b>	<b>95</b>	<b>13325</b>	<b>-79</b>	<b>66</b>	<b>246</b>	<b>0</b>	<b>-197</b>	<b>36</b>
02/29/2016	15.36%	56.95%	22.59%	3.04%	2.05%	100.00%	2049	7595	3013	406	273	13336	69	20	-258	2	178	11
<b>03/31/2016</b>	<b>16.05%</b>	<b>58.12%</b>	<b>20.91%</b>	<b>2.97%</b>	<b>1.95%</b>	<b>100.00%</b>	<b>2176</b>	<b>7880</b>	<b>2835</b>	<b>402</b>	<b>265</b>	<b>13558</b>	<b>127</b>	<b>285</b>	<b>-178</b>	<b>-4</b>	<b>-8</b>	<b>222</b>
04/30/2016	16.31%	56.47%	22.33%	2.90%	1.98%	100.00%	2222	7693	3042	395	270	13622	46	-187	207	-7	5	64
05/31/2016	16.40%	56.37%	22.52%	2.86%	1.85%	100.00%	2238	7690	3073	390	252	13643	16	-3	31	-5	-18	21
<b>06/30/2016</b>	<b>16.31%</b>	<b>56.24%</b>	<b>22.68%</b>	<b>2.76%</b>	<b>2.00%</b>	<b>100.00%</b>	<b>2231</b>	<b>7694</b>	<b>3103</b>	<b>378</b>	<b>274</b>	<b>13680</b>	<b>-7</b>	<b>4</b>	<b>30</b>	<b>-12</b>	<b>22</b>	<b>37</b>
07/31/2016	16.27%	55.53%	23.46%	2.84%	1.90%	100.00%	2227	7600	3211	388	260	13686	-4	-94	108	10	-14	6
08/31/2016	16.10%	56.20%	22.74%	2.88%	2.09%	100.00%	2205	7699	3115	394	286	13699	-22	99	-96	6	26	13
<b>9/30/2016</b>	<b>15.98%</b>	<b>56.24%</b>	<b>24.73%</b>	<b>2.91%</b>	<b>0.15%</b>	<b>100.00%</b>	<b>2188</b>	<b>7701</b>	<b>3386</b>	<b>398</b>	<b>20</b>	<b>13693</b>	<b>-17</b>	<b>2</b>	<b>271</b>	<b>4</b>	<b>-266</b>	<b>-6</b>
10/31/2016	16.62%	56.01%	24.48%	2.78%	0.11%	100.00%	2282	7689	3361	381	15	13728	94	-12	-25	-17	-5	35
11/30/2016	16.05%	55.79%	24.99%	2.92%	0.25%	100.00%	2210	7680	3440	402	34	13766	-72	-9	79	21	19	38
<b>12/31/2016</b>	<b>16.08%</b>	<b>53.56%</b>	<b>27.35%</b>	<b>2.87%</b>	<b>0.14%</b>	<b>100.00%</b>	<b>2221</b>	<b>7395</b>	<b>3777</b>	<b>396</b>	<b>19</b>	<b>13808</b>	<b>11</b>	<b>-285</b>	<b>337</b>	<b>-6</b>	<b>-15</b>	<b>42</b>
1/31/2017	16.15%	53.27%	27.37%	3.13%	0.08%	100.00%	2220	7324	3763	430	11	13748	-1	-71	-14	34	-8	-60
2/28/2017	16.09%	53.52%	28.66%	1.10%	0.64%	100.00%	2201	7322	3921	150	87	13681	-19	-2	158	-280	76	-67
<b>3/31/2017</b>	<b>16.42%</b>	<b>53.34%</b>	<b>28.59%</b>	<b>1.25%</b>	<b>0.41%</b>	<b>100.00%</b>	<b>2253</b>	<b>7319</b>	<b>3923</b>	<b>171</b>	<b>56</b>	<b>13722</b>	<b>52</b>	<b>-3</b>	<b>2</b>	<b>21</b>	<b>-31</b>	<b>41</b>
4/30/2017	16.48%	53.66%	28.13%	1.58%	0.15%	100.00%	2273	7401	3880	218	20	13792	20	82	-43	47	-36	70
5/31/2017	16.69%	53.26%	28.30%	1.48%	0.25%	100.00%	2306	7358	3910	205	35	13814	33	-43	30	-13	15	22
<b>6/30/2017</b>	<b>16.81%</b>	<b>52.88%</b>	<b>29.02%</b>	<b>1.13%</b>	<b>0.16%</b>	<b>100.00%</b>	<b>2314</b>	<b>7279</b>	<b>3994</b>	<b>155</b>	<b>22</b>	<b>13764</b>	<b>8</b>	<b>-79</b>	<b>84</b>	<b>-50</b>	<b>-13</b>	<b>-50</b>
7/31/2017	16.75%	53.11%	28.43%	1.56%	0.15%	100.00%	2287	7250	3881	213	21	13652	-27	-29	-113	58	-1	-112
8/31/2017	17.09%	52.93%	28.45%	1.49%	0.04%	100.00%	2345	7263	3904	204	6	13722	58	13	23	-9	-15	70
<b>9/30/2017</b>	<b>16.68%</b>	<b>53.25%</b>	<b>28.53%</b>	<b>1.51%</b>	<b>0.03%</b>	<b>100.00%</b>	<b>2279</b>	<b>7277</b>	<b>3899</b>	<b>207</b>	<b>4</b>	<b>13666</b>	<b>-66</b>	<b>14</b>	<b>-5</b>	<b>3</b>	<b>-2</b>	<b>-56</b>
10/31/2017	16.38%	53.72%	28.27%	1.60%	0.03%	100.00%	2230	7316	3850	218	4	13618	-49	39	-49	11	0	-48
11/30/2017	15.99%	53.89%	28.62%	1.47%	0.04%	100.00%	2146	7233	3841	197	6	13423	-84	-83	-9	-21	2	-195
<b>12/31/2017</b>	<b>15.78%</b>	<b>53.05%</b>	<b>29.57%</b>	<b>1.60%</b>	<b>0.01%</b>	<b>100.00%</b>	<b>2096</b>	<b>7047</b>	<b>3928</b>	<b>212</b>	<b>1</b>	<b>13284</b>	<b>-50</b>	<b>-186</b>	<b>87</b>	<b>15</b>	<b>-5</b>	<b>-139</b>
01/31/2018	15.74%	53.25%	29.42%	1.54%	0.05%	100.00%	2078	7028	3883	203	6	13198	-18	-19	-45	-9	5	-86
2/28/2018	16.29%	53.36%	28.75%	1.56%	0.05%	100.00%	2154	7053	3800	206	6	13219	76	25	-83	3	0	21
<b>3/31/2018</b>	<b>16.86%</b>	<b>52.18%</b>	<b>29.78%</b>	<b>1.17%</b>	<b>0.01%</b>	<b>100.00%</b>	<b>2235</b>	<b>6916</b>	<b>3948</b>	<b>155</b>	<b>1</b>	<b>13255</b>	<b>81</b>	<b>-137</b>	<b>148</b>	<b>-51</b>	<b>-5</b>	<b>36</b>
4/30/2018	16.09%	52.47%	30.25%	1.19%	0.00%	100.00%	2123	6924	3992	157	0	13196	-112	8	44	2		-59
5/31/2018	16.57%	53.44%	28.68%	1.26%	0.05%	100.00%	2189	7062	3790	167	6	13214	66	138	-202	10	<b>6</b>	18
6/30/2018	16.53%	53.49%	28.73%	1.25%	0.00%	100.00%	2187	7075	3801	165	0	13228	-2	13	11	-2		14
7/31/2018	16.43%	53.20%	29.08%	1.26%	0.03%	100.00%	2175	7042	3850	167	4	13238	-12	-33	49	2	4	10
8/31/2018	16.49%	53.02%	29.21%	1.27%	0.00%	100.00%	2189	7038	3877	169	0	13273	14	-4	27	2		35
9/30/2018	16.55%	52.70%	29.47%	1.27%	0.00%	100.00%	2199	7001	3915	169	0	13284	10	-37	38	0		11
10/31/2018	16.55%	52.82%	29.32%	1.31%	0.00%	100.00%	2196	7007	3889	174	0	13266	-3	6	-26	5		-18
11/30/2018	16.47%	55.16%	27.13%	1.25%	0.00%	100.00%	2180	7302	3591	165	0	13238	-16	295	-298	-9		-28
12/31/2018	16.30%	53.02%	29.44%	1.25%	0.00%	100.00%	2153	7004	3889	165	0	13211	-27	-298	298	0		-27
1/31/2019	16.39%	53.14%	29.25%	1.23%	0.00%	100.00%	2154	6982	3843	161	0	13140	1	-22	-46	-4		-71
2/28/2019	16.05%	53.45%	29.35%	1.16%	0.00%	100.00%	2103	7005	3846	152	0	13106	-51	23	3	-9		-34
<b>3/31/2019</b>	<b>16.33%</b>	<b>53.45%</b>	<b>28.96%</b>	<b>1.26%</b>	<b>0.00%</b>	<b>100.00%</b>	<b>2141</b>	<b>7008</b>	<b>3797</b>	<b>165</b>	<b>0</b>	<b>13111</b>	<b>38</b>	<b>3</b>	<b>-49</b>	<b>13</b>		<b>5</b>
4/30/2019	16.36%	53.91%	28.39%	1.34%	0.00%	100.00%	2137	7042	3708	175	0	13062	-4	34	-89	10		-49
5/31/2019	16.32%	53.90%	28.50%	1.29%	0.00%	100.00%	2120	7001	3702	167	0	12990	-17	-41	-6	-8		-72

**CUSTODY DISTRIBUTION OF THE IN-HOUSE POPULATION AND INDIVIDUALS HOUSED TEMPORARILY IN FACILITIES OUT OF STATE**

DATE	MALE POPULATION CUSTODY DISTRIBUTION						POPULATION BY CUSTODY LEVEL						CHANGE IN POPULATION BY CUSTODY LEVEL						
	MIN&CT	MED	CLS	MAX	UNA	TOTAL	MIN&CT	MED	CLS	MAX	UNA	TOTAL	MIN&CT	MED	CLS	MAX	UNA	TOTAL	
01/31/2015	13.80%	56.60%	24.48%	2.60%	2.52%	100.00%	1621	6649	2876	306	296	11748							0
<b>03/31/2015</b>	<b>13.63%</b>	<b>55.43%</b>	<b>26.11%</b>	<b>3.19%</b>	<b>1.64%</b>	<b>100.00%</b>	<b>1613</b>	<b>6559</b>	<b>3089</b>	<b>377</b>	<b>194</b>	<b>11832</b>	<b>-8</b>	<b>-90</b>	<b>213</b>	<b>71</b>	<b>-102</b>	<b>84</b>	
10/31/2015	14.15%	54.94%	25.91%	3.36%	1.64%	100.00%	1701	6601	3113	404	197	12016	88	42	24	27	3	184	
11/30/2015	14.19%	56.58%	24.20%	3.36%	1.67%	100.00%	1796	6813	2914	404	201	12128	95	212	-199	0	4	112	
<b>12/31/2015</b>	<b>14.14%</b>	<b>56.18%</b>	<b>26.03%</b>	<b>3.33%</b>	<b>0.31%</b>	<b>100.00%</b>	<b>1716</b>	<b>6818</b>	<b>3159</b>	<b>404</b>	<b>38</b>	<b>12135</b>	<b>-80</b>	<b>5</b>	<b>245</b>	<b>0</b>	<b>-163</b>	<b>7</b>	
02/29/2016	14.62%	56.25%	23.97%	3.35%	1.81%	100.00%	1773	6822	2907	406	220	12128	57	4	-252	2	182	-7	
<b>03/31/2016</b>	<b>15.36%</b>	<b>57.59%</b>	<b>22.07%</b>	<b>3.25%</b>	<b>1.72%</b>	<b>100.00%</b>	<b>1898</b>	<b>7114</b>	<b>2726</b>	<b>402</b>	<b>213</b>	<b>12353</b>	<b>125</b>	<b>292</b>	<b>-181</b>	<b>-4</b>	<b>-7</b>	<b>225</b>	
04/30/2016	15.62%	55.83%	23.51%	3.19%	1.86%	100.00%	1937	6923	2915	395	231	12401	39	-191	189	-7	18	48	
05/31/2016	15.71%	55.71%	23.80%	3.14%	1.64%	100.00%	1950	6915	2954	390	204	12413	13	-8	39	-5	-27	12	
<b>06/30/2016</b>	<b>15.75%</b>	<b>55.49%</b>	<b>23.89%</b>	<b>3.03%</b>	<b>1.84%</b>	<b>100.00%</b>	<b>1962</b>	<b>6911</b>	<b>2975</b>	<b>378</b>	<b>229</b>	<b>12455</b>	<b>12</b>	<b>-4</b>	<b>21</b>	<b>-12</b>	<b>25</b>	<b>42</b>	
07/31/2016	15.78%	54.69%	24.79%	3.11%	1.63%	100.00%	1966	6816	3089	388	203	12462	4	-95	114	10	-26	7	
08/31/2016	15.58%	55.41%	23.99%	3.16%	1.87%	100.00%	1945	6916	2994	394	233	12482	-21	100	-95	6	30	20	
<b>9/30/2016</b>	<b>15.47%</b>	<b>55.50%</b>	<b>25.70%</b>	<b>3.19%</b>	<b>0.14%</b>	<b>100.00%</b>	<b>1929</b>	<b>6922</b>	<b>3206</b>	<b>398</b>	<b>18</b>	<b>12473</b>	<b>-16</b>	<b>6</b>	<b>212</b>	<b>4</b>	<b>-215</b>	<b>-9</b>	
10/31/2016	16.06%	55.31%	25.48%	3.05%	0.10%	100.00%	2007	6910	3183	381	13	12494	78	-12	-23	-17	-5	21	
11/30/2016	15.47%	54.95%	26.09%	3.21%	0.27%	100.00%	1937	6880	3267	402	34	12520	-70	-30	84	21	21	26	
<b>12/31/2016</b>	<b>15.57%</b>	<b>52.42%</b>	<b>28.72%</b>	<b>3.16%</b>	<b>0.14%</b>	<b>100.00%</b>	<b>1954</b>	<b>6579</b>	<b>3604</b>	<b>396</b>	<b>17</b>	<b>12550</b>	<b>17</b>	<b>-301</b>	<b>337</b>	<b>-6</b>	<b>-17</b>	<b>30</b>	
1/31/2017	15.50%	52.21%	28.78%	3.45%	0.07%	100.00%	1932	6509	3588	430	9	12468	-22	-70	-16	34	-8	-82	
2/28/2017	15.43%	52.51%	30.59%	1.20%	0.27%	100.00%	1925	6549	3815	150	34	12473	-7	40	227	-280	25	5	
<b>3/31/2017</b>	<b>15.78%</b>	<b>52.35%</b>	<b>30.47%</b>	<b>1.37%</b>	<b>0.03%</b>	<b>100.00%</b>	<b>1975</b>	<b>6553</b>	<b>3814</b>	<b>171</b>	<b>4</b>	<b>12517</b>	<b>50</b>	<b>4</b>	<b>-1</b>	<b>21</b>	<b>-30</b>	<b>44</b>	
4/30/2017	15.91%	52.44%	29.75%	1.74%	0.15%	100.00%	1988	6553	3717	218	19	12495	13	0	-97	47	15	-22	
5/31/2017	16.20%	52.03%	29.86%	1.64%	0.27%	100.00%	2027	6512	3737	205	34	12515	39	-41	20	-13	15	20	
<b>6/30/2017</b>	<b>16.39%</b>	<b>51.54%</b>	<b>30.67%</b>	<b>1.24%</b>	<b>0.16%</b>	<b>100.00%</b>	<b>2043</b>	<b>6426</b>	<b>3824</b>	<b>155</b>	<b>20</b>	<b>12468</b>	<b>16</b>	<b>-86</b>	<b>87</b>	<b>-50</b>	<b>-14</b>	<b>-47</b>	
7/31/2017	16.32%	51.70%	30.11%	1.72%	0.15%	100.00%	2021	6400	3727	213	19	12380	-22	-26	-97	58	-1	-88	
8/31/2017	16.61%	51.40%	30.32%	1.64%	0.03%	100.00%	2068	6398	3774	204	4	12448	47	-2	47	-9	-15	68	
<b>9/30/2017</b>	<b>16.21%</b>	<b>51.72%</b>	<b>30.37%</b>	<b>1.67%</b>	<b>0.03%</b>	<b>100.00%</b>	<b>2009</b>	<b>6411</b>	<b>3764</b>	<b>207</b>	<b>4</b>	<b>12395</b>	<b>-59</b>	<b>13</b>	<b>-10</b>	<b>3</b>	<b>0</b>	<b>-53</b>	
10/31/2017	15.85%	52.15%	30.21%	1.76%	0.03%	100.00%	1958	6442	3732	218	4	12354	-51	31	-32	11	0	-41	
11/30/2017	15.30%	51.99%	30.94%	1.73%	0.03%	100.00%	1884	6401	3809	213	4	12311	-74	-41	77	-5	0	-43	
<b>12/31/2017</b>	<b>14.96%</b>	<b>51.28%</b>	<b>31.90%</b>	<b>1.86%</b>	<b>0.00%</b>	<b>100.00%</b>	<b>1833</b>	<b>6282</b>	<b>3908</b>	<b>228</b>	<b>0</b>	<b>12251</b>	<b>-51</b>	<b>-119</b>	<b>99</b>	<b>15</b>	<b>-4</b>	<b>-60</b>	
1/31/2018	14.78%	51.67%	31.72%	1.79%	0.03%	100.00%	1804	6309	3873	219	4	12209	-29	27	-35	-9	4	-42	
2/28/2018	15.44%	51.57%	31.10%	1.86%	0.03%	100.00%	1880	6280	3787	226	4	12177	76	-29	-86	7	0	-32	
<b>3/31/2018</b>	<b>16.15%</b>	<b>50.28%</b>	<b>32.14%</b>	<b>1.43%</b>	<b>0.00%</b>	<b>100.00%</b>	<b>1972</b>	<b>6141</b>	<b>3926</b>	<b>175</b>	<b>0</b>	<b>12214</b>	<b>92</b>	<b>-139</b>	<b>139</b>	<b>-51</b>	<b>-4</b>	<b>37</b>	
4/30/2018	15.50%	50.55%	32.50%	1.45%	0.00%	100.00%	1888	6156	3958	177	0	12179	-84	15	32	2	0	-35	
5/31/2018	16.02%	51.41%	31.00%	1.53%	0.03%	100.00%	1957	6279	3786	187	4	12213	69	123	-172	10	4	34	
<b>6/30/2018</b>	<b>16.08%</b>	<b>51.44%</b>	<b>30.97%</b>	<b>1.52%</b>	<b>0.00%</b>	<b>100.00%</b>	<b>1963</b>	<b>6281</b>	<b>3782</b>	<b>185</b>	<b>0</b>	<b>12211</b>	<b>6</b>	<b>2</b>	<b>-4</b>	<b>-2</b>	<b>-4</b>	<b>-2</b>	
7/31/2018	15.91%	51.27%	31.26%	1.53%	0.03%	100.00%	1946	6273	3825	187	4	12235	-17	-8	43	2	4	24	
8/31/2018	16.03%	50.93%	31.51%	1.54%	0.00%	100.00%	1968	6254	3870	189	0	12280	22	-19	45	2	-4	46	
9/30/2018	16.10%	51.90%	30.62%	1.38%	0.00%	100.00%	1975	6368	3757	169	0	12269	7	114	-113	-20	0	-12	
10/31/2018	16.18%	50.89%	31.36%	1.57%	0.00%	100.00%	1980	6226	3837	192	0	12235	5	-142	80	23	0	-34	
11/30/2018	16.12%	53.00%	29.46%	1.44%	0.00%	100.00%	1964	6458	3589	175	0	12184	-16	232	-248	-17	0	-49	
12/31/2018	15.88%	51.21%	31.47%	1.44%	0.00%	100.00%	1930	6225	3826	175	0	12156	-34	-233	237	0	0	-30	
1/31/2019	15.87%	51.73%	30.98%	1.42%	0.00%	100.00%	1917	6250	3743	171	0	12081	-13	25	-83	-4	0	-75	
2/28/2019	15.51%	52.06%	31.09%	1.35%	0.00%	100.00%	1867	6268	3744	162	0	12041	-50	18	1	-9	0	-40	
<b>3/31/2019</b>	<b>15.82%</b>	<b>52.03%</b>	<b>30.69%</b>	<b>1.45%</b>	<b>0.00%</b>	<b>100.00%</b>	<b>1906</b>	<b>6267</b>	<b>3697</b>	<b>175</b>	<b>0</b>	<b>12045</b>	<b>39</b>	<b>-1</b>	<b>-47</b>	<b>13</b>	<b>0</b>	<b>4</b>	
4/30/2019	15.84%	52.64%	29.98%	1.54%	0.00%	100.00%	1902	6322	3601	185	0	12010	-4	55	-96	10	0	-35	
5/31/2019	15.58%	52.66%	30.28%	1.48%	0.00%	100.00%	1861	6289	3616	177	0	11943	-41	-33	15	-8	0	-67	

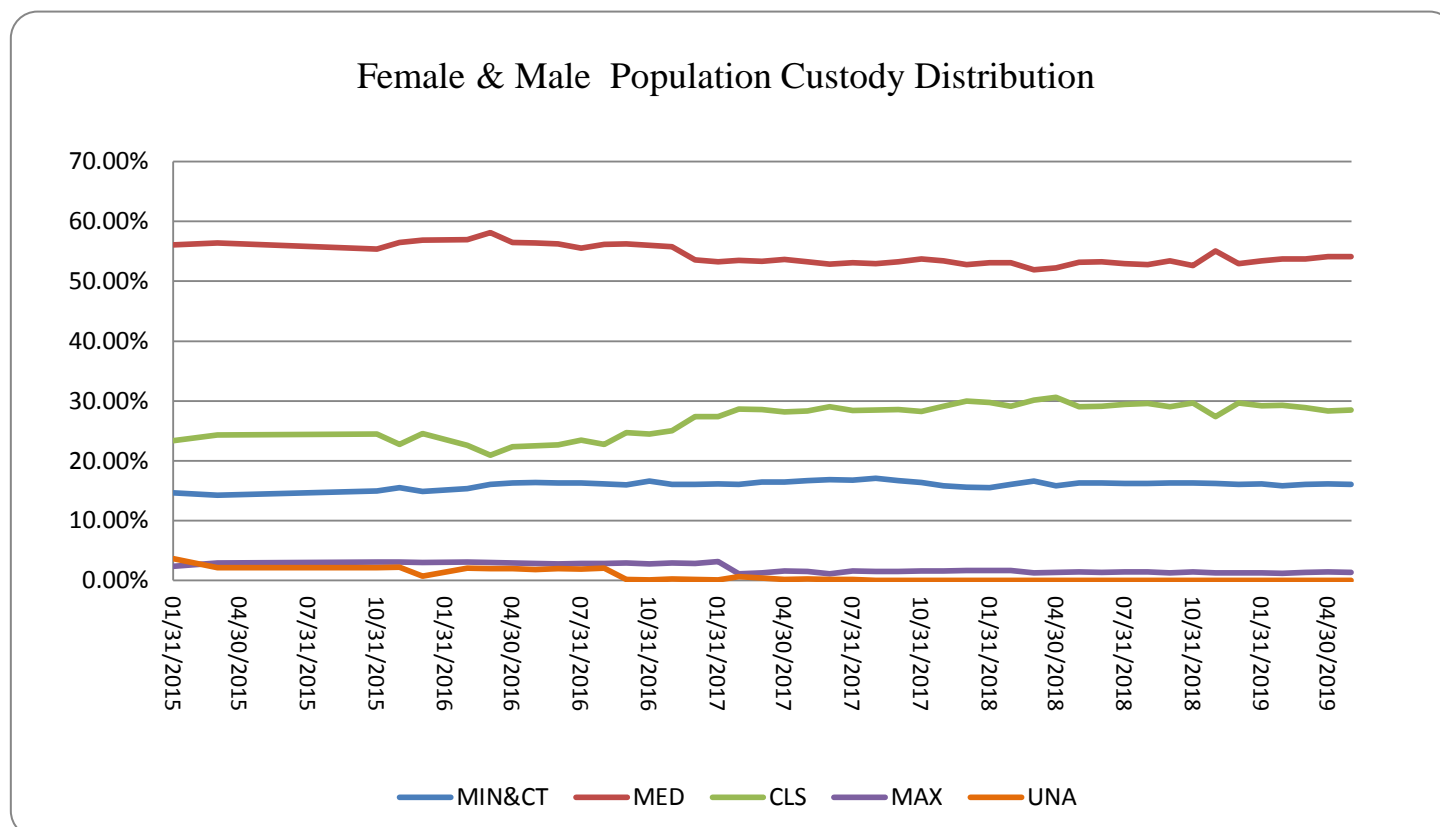
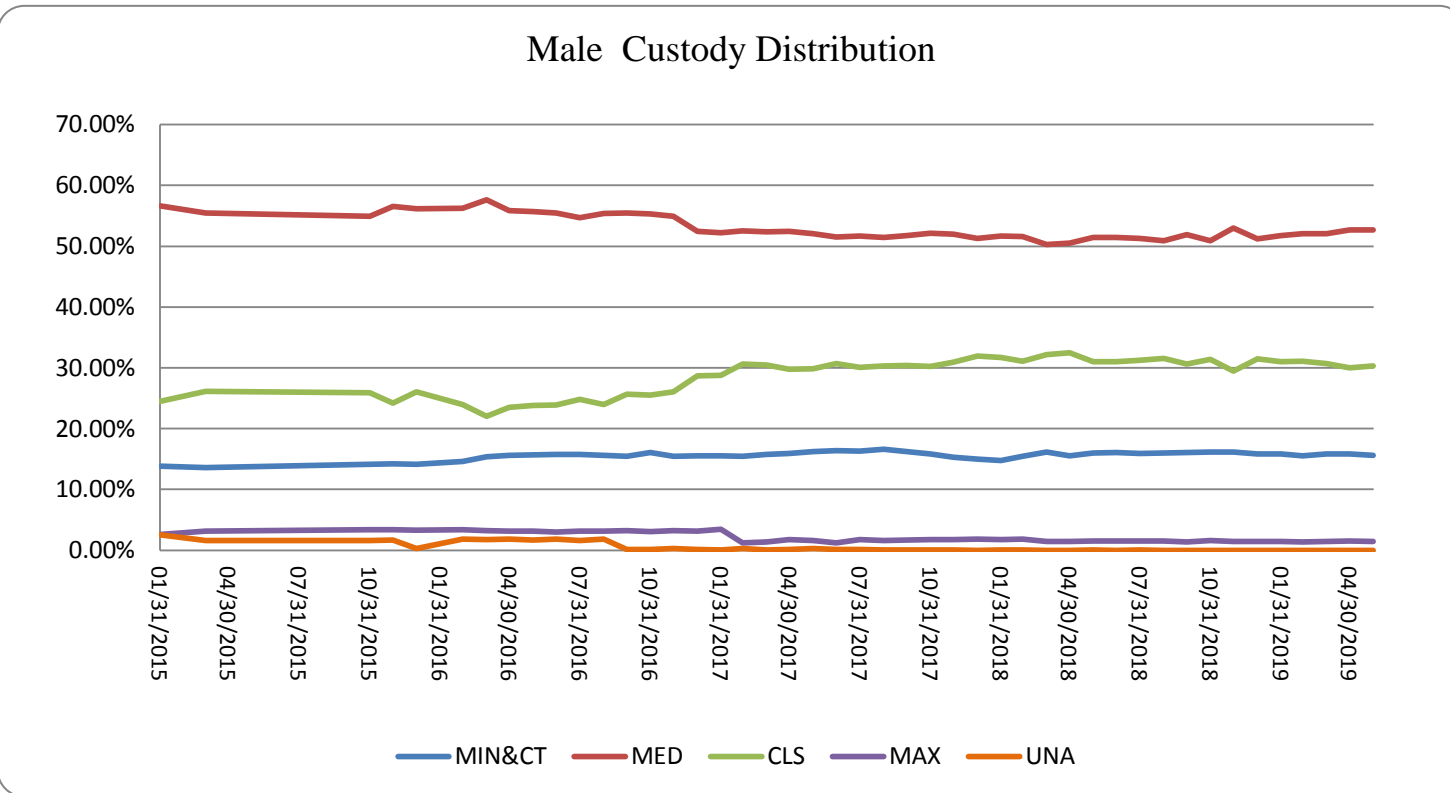
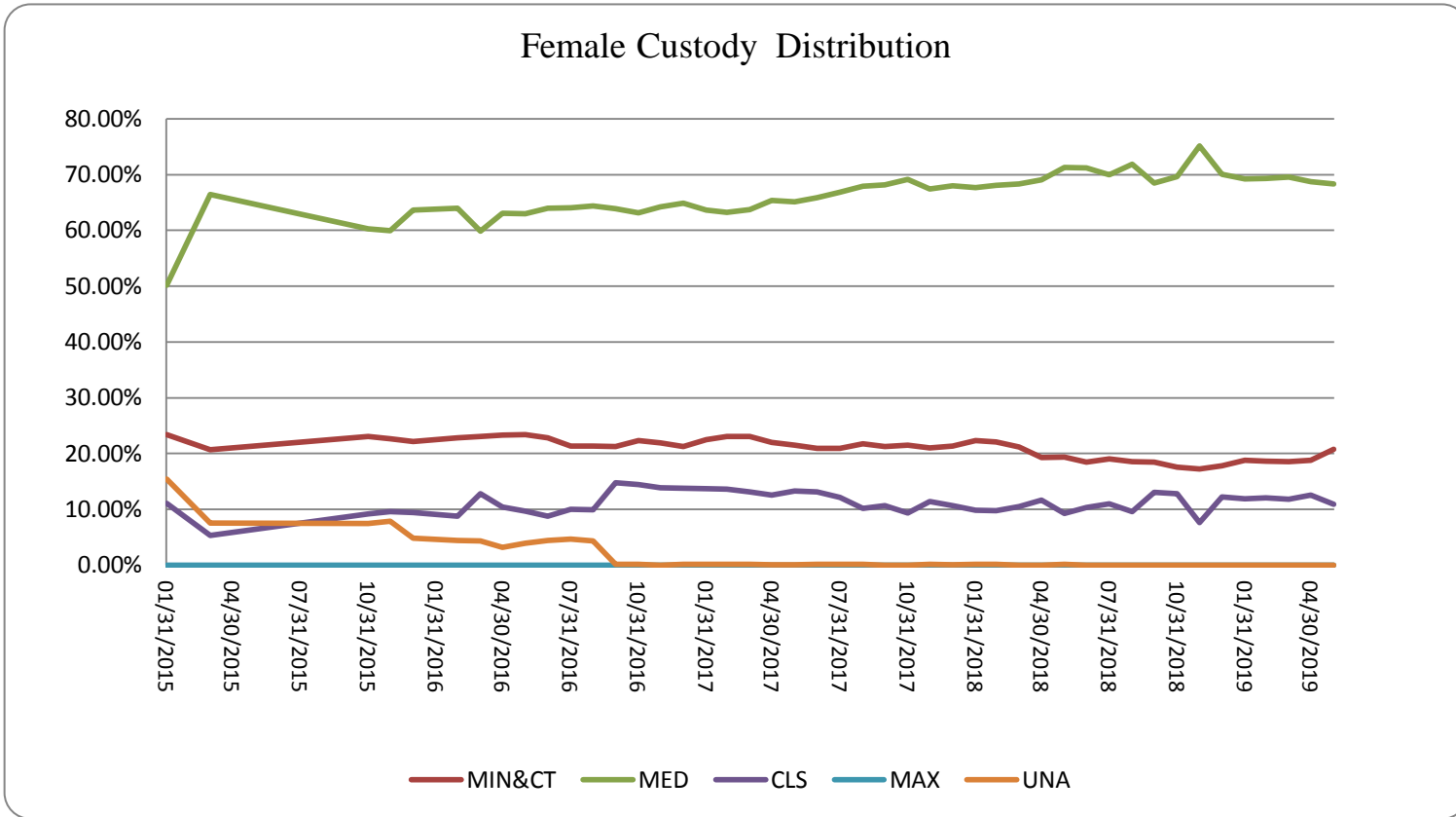
**CUSTODY DISTRIBUTION OF THE IN-HOUSE POPULATION WITHOUT INDIVIDUALS HOUSED TEMPORARILY IN FACILITIES OUT OF STATE**

MALE POPULATION CUSTODY DISTRIBUTION								POPULATION BY CUSTODY LEVEL						CHANGE IN POPULATION BY CUSTODY LEVEL					
DATE	MIN&CT	MED	CLS	MAX	UNA	TOTAL		MIN&CT	MED	CLS	MAX	UNA	TOTAL	MIN&CT	MED	CLS	MAX	UNA	TOTAL
01/31/2015	13.80%	56.60%	24.48%	2.60%	2.52%	100.00%		1621	6649	2876	306	296	11748						0
<b>03/31/2015</b>	<b>13.63%</b>	<b>55.43%</b>	<b>26.11%</b>	<b>3.19%</b>	<b>1.64%</b>	<b>100.00%</b>		<b>1613</b>	<b>6559</b>	<b>3089</b>	<b>377</b>	<b>194</b>	<b>11832</b>	<b>-8</b>	<b>-90</b>	<b>213</b>	<b>71</b>	<b>-102</b>	<b>84</b>
10/31/2015	14.15%	54.94%	25.91%	3.36%	1.64%	100.00%		1701	6601	3113	404	197	12016	88	42	24	27	3	184
11/30/2015	14.19%	56.58%	24.20%	3.36%	1.67%	100.00%		1796	6813	2914	404	201	12128	95	212	-199	0	4	112
<b>12/31/2015</b>	<b>14.14%</b>	<b>56.18%</b>	<b>26.03%</b>	<b>3.33%</b>	<b>0.31%</b>	<b>100.00%</b>		<b>1716</b>	<b>6818</b>	<b>3159</b>	<b>404</b>	<b>38</b>	<b>12135</b>	<b>-80</b>	<b>5</b>	<b>245</b>	<b>0</b>	<b>-163</b>	<b>7</b>
02/29/2016	14.62%	56.25%	23.97%	3.35%	1.81%	100.00%		1773	6822	2907	406	220	12128	57	4	-252	2	182	-7
<b>03/31/2016</b>	<b>15.36%</b>	<b>57.59%</b>	<b>22.07%</b>	<b>3.25%</b>	<b>1.72%</b>	<b>100.00%</b>		<b>1898</b>	<b>7114</b>	<b>2726</b>	<b>402</b>	<b>213</b>	<b>12353</b>	<b>125</b>	<b>292</b>	<b>-181</b>	<b>-4</b>	<b>-7</b>	<b>225</b>
04/30/2016	15.62%	55.83%	23.51%	3.19%	1.86%	100.00%		1937	6923	2915	395	231	12401	39	-191	189	-7	18	48
05/31/2016	15.71%	55.71%	23.80%	3.14%	1.64%	100.00%		1950	6915	2954	390	204	12413	13	-8	39	-5	-27	12
<b>06/30/2016</b>	<b>15.75%</b>	<b>55.49%</b>	<b>23.89%</b>	<b>3.03%</b>	<b>1.84%</b>	<b>100.00%</b>		<b>1962</b>	<b>6911</b>	<b>2975</b>	<b>378</b>	<b>229</b>	<b>12455</b>	<b>12</b>	<b>-4</b>	<b>21</b>	<b>-12</b>	<b>25</b>	<b>42</b>
07/31/2016	15.78%	54.69%	24.79%	3.11%	1.63%	100.00%		1966	6816	3089	388	203	12462	4	-95	114	10	-26	7
08/31/2016	15.58%	55.41%	23.99%	3.16%	1.87%	100.00%		1945	6916	2994	394	233	12482	-21	100	-95	6	30	20
<b>9/30/2016</b>	<b>15.47%</b>	<b>55.50%</b>	<b>25.70%</b>	<b>3.19%</b>	<b>0.14%</b>	<b>100.00%</b>		<b>1929</b>	<b>6922</b>	<b>3206</b>	<b>398</b>	<b>18</b>	<b>12473</b>	<b>-16</b>	<b>6</b>	<b>212</b>	<b>4</b>	<b>-215</b>	<b>-9</b>
10/31/2016	16.06%	55.31%	25.48%	3.05%	0.10%	100.00%		2007	6910	3183	381	13	12494	78	-12	-23	-17	-5	21
11/30/2016	15.47%	54.95%	26.09%	3.21%	0.27%	100.00%		1937	6880	3267	402	34	12520	-70	-30	84	21	21	26
<b>12/31/2016</b>	<b>15.57%</b>	<b>52.42%</b>	<b>28.72%</b>	<b>3.16%</b>	<b>0.14%</b>	<b>100.00%</b>		<b>1954</b>	<b>6579</b>	<b>3604</b>	<b>396</b>	<b>17</b>	<b>12550</b>	<b>17</b>	<b>-301</b>	<b>337</b>	<b>-6</b>	<b>-17</b>	<b>30</b>
1/31/2017	15.50%	52.21%	28.78%	3.45%	0.07%	100.00%		1932	6509	3588	430	9	12468	-22	-70	-16	34	-8	-82
2/28/2017	15.43%	52.51%	30.59%	1.20%	0.27%	100.00%		1925	6549	3815	150	34	12473	-7	40	227	-280	25	5
<b>3/31/2017</b>	<b>15.78%</b>	<b>52.35%</b>	<b>30.47%</b>	<b>1.37%</b>	<b>0.03%</b>	<b>100.00%</b>		<b>1975</b>	<b>6553</b>	<b>3814</b>	<b>171</b>	<b>4</b>	<b>12517</b>	<b>50</b>	<b>4</b>	<b>-1</b>	<b>21</b>	<b>-30</b>	<b>44</b>
4/30/2017	15.91%	52.44%	29.75%	1.74%	0.15%	100.00%		1988	6553	3717	218	19	12495	13	0	-97	47	15	-22
5/31/2017	16.20%	52.03%	29.86%	1.64%	0.27%	100.00%		2027	6512	3737	205	34	12515	39	-41	20	-13	15	20
<b>6/30/2017</b>	<b>16.39%</b>	<b>51.54%</b>	<b>30.67%</b>	<b>1.24%</b>	<b>0.16%</b>	<b>100.00%</b>		<b>2043</b>	<b>6426</b>	<b>3824</b>	<b>155</b>	<b>20</b>	<b>12468</b>	<b>16</b>	<b>-86</b>	<b>87</b>	<b>-50</b>	<b>-14</b>	<b>-47</b>
7/31/2017	16.32%	51.70%	30.11%	1.72%	0.15%	100.00%		2021	6400	3727	213	19	12380	-22	-26	-97	58	-1	-88
8/31/2017	16.61%	51.40%	30.32%	1.64%	0.03%	100.00%		2068	6398	3774	204	4	12448	47	-2	47	-9	-15	68
<b>9/30/2017</b>	<b>16.21%</b>	<b>51.72%</b>	<b>30.37%</b>	<b>1.67%</b>	<b>0.03%</b>	<b>100.00%</b>		<b>2009</b>	<b>6411</b>	<b>3764</b>	<b>207</b>	<b>4</b>	<b>12395</b>	<b>-59</b>	<b>13</b>	<b>-10</b>	<b>3</b>	<b>0</b>	<b>-53</b>
10/31/2017	15.85%	52.15%	30.21%	1.76%	0.03%	100.00%		1958	6442	3732	218	4	12354	-51	31	-32	11	0	-41
11/30/2017	15.47%	52.50%	30.38%	1.62%	0.03%	100.00%		1884	6392	3699	197	4	12176	-74	-50	-33	-21	0	-178
<b>12/31/2017</b>	<b>15.21%</b>	<b>51.52%</b>	<b>31.51%</b>	<b>1.76%</b>	<b>0.00%</b>	<b>100.00%</b>		<b>1833</b>	<b>6209</b>	<b>3797</b>	<b>212</b>	<b>0</b>	<b>12051</b>	<b>-51</b>	<b>-183</b>	<b>98</b>	<b>15</b>	<b>-4</b>	<b>-125</b>
1/31/2018	15.07%	51.78%	31.43%	1.70%	0.03%	100.00%		1804	6198	3762	203	4	11971	-29	-11	-35	-9	4	-80
2/28/2018	15.70%	51.83%	30.72%	1.72%	0.03%	100.00%		1880	6208	3679	206	4	11977	76	10	-83	3	0	6
<b>3/31/2018</b>	<b>16.41%</b>	<b>50.51%</b>	<b>31.78%</b>	<b>1.29%</b>	<b>0.01%</b>	<b>100.00%</b>		<b>1972</b>	<b>6069</b>	<b>3818</b>	<b>155</b>	<b>1</b>	<b>12015</b>	<b>92</b>	<b>-139</b>	<b>139</b>	<b>-51</b>	<b>-3</b>	<b>38</b>
4/30/2018	15.76%	50.79%	32.14%	1.31%	0.00%	100.00%		1888	6084	3850	157	0	11979	-84	15	32	2	-1	-36
5/31/2018	16.29%	51.66%	30.62%	1.39%	0.03%	100.00%		1957	6207	3679	167	4	12014	69	123	-171	10	4	35
6/30/2018	<b>16.34%</b>	<b>51.69%</b>	<b>30.59%</b>	<b>1.37%</b>	<b>0.00%</b>	<b>100.00%</b>		<b>1963</b>	<b>6209</b>	<b>3675</b>	<b>165</b>	<b>0</b>	<b>12012</b>	<b>6</b>	<b>2</b>	<b>-4</b>	<b>-2</b>	<b>-4</b>	<b>-2</b>
7/31/2018	16.17%	51.52%	30.89%	1.39%	0.03%	100.00%		1946	6201	3718	167	4	12036	-17	-8	43	2	4	24
8/31/2018	16.29%	51.17%	31.15%	1.40%	0.00%	100.00%		1968	6182	3763	169	0	12082	22	-19	45	2	-4	46
9/30/2018	16.36%	51.11%	31.12%	1.40%	0.00%	100.00%		1975	6170	3757	169	0	12071	7	-12	-6	0	0	-11
10/31/2018	16.45%	51.10%	31.00%	1.45%	0.00%	100.00%		1980	6151	3732	174	0	12037	5	-19	-25	5	0	-34
11/30/2018	16.39%	53.07%	29.17%	1.38%	0.00%	100.00%		1964	6361	3496	165	0	11986	-16	210	-236	-9	0	-51
12/31/2018	16.14%	51.23%	31.25%	1.38%	0.00%	100.00%		1930	6125	3736	165	0	11956	-34	-236	240	0	0	-30
1/31/2019	16.14%	51.43%	31.08%	1.36%	0.00%	100.00%		1917	6110	3693	161	0	11881	-13	-15	-43	-4	0	-75
2/28/2019	15.77%	51.75%	31.20%	1.28%	0.00%	100.00%		1867	6128	3694	152	0	11841	-50	18	1	-9	0	-40
3/31/2019	16.09%	51.73%	30.79%	1.39%	0.00%	100.00%		1906	6127	3647	165	0	11845	39	-1	-47	13	0	4
4/30/2019	16.10%	52.35%	30.07%	1.48%	0.00%	100.00%		1902	6182	3551	175	0	11810	-4	55	-96	10	0	-35
5/31/2019	15.85%	52.36%	30.37%	1.42%	0.00%	100.00%		1861	6149	3566	167	0	11743	-41	-33	15	-8	0	-67

**CUSTODY DISTRIBUTION OF THE IN-HOUSE POPULATION WITHOUT INDIVIDUALS HOUSED TEMPORARILY IN FACILITIES OUT OF STATE**

FEMALE POPULATION CUSTODY DISTRIBUTION							POPULATION BY CUSTODY LEVEL							CHANGE IN POPULATION BY CUSTODY LEVEL					
DATE	MIN&CT	MED	CLS	MAX	UNA	TOTAL	DATE	MIN&CT	MED	CLS	MAX	UNA	TOTAL	MIN&CT	MED	CLS	MAX	UNA	TOTAL
01/31/2015	23.41%	50.14%	11.06%	0.00%	15.39%	100.00%	01/31/2015	254	544	120	0	167	1085						0
<b>03/31/2015</b>	<b>20.70%</b>	<b>66.43%</b>	<b>5.31%</b>	<b>0.00%</b>	<b>7.56%</b>	<b>100.00%</b>	<b>03/31/2015</b>	<b>230</b>	<b>738</b>	<b>59</b>	<b>0</b>	<b>84</b>	<b>1111</b>	<b>-24</b>	<b>194</b>	<b>-61</b>	<b>0</b>	<b>-83</b>	<b>26</b>
10/31/2015	23.10%	60.29%	9.17%	0.00%	7.44%	100.00%	10/31/2015	267	697	106	0	86	1156	37	-41	47	0	2	45
11/30/2015	22.65%	59.95%	9.56%	0.00%	7.84%	100.00%	11/30/2015	263	696	111	0	91	1161	-4	-1	5	0	5	5
<b>12/31/2015</b>	<b>22.18%</b>	<b>63.61%</b>	<b>9.41%</b>	<b>0.00%</b>	<b>4.79%</b>	<b>100.00%</b>	<b>12/31/2015</b>	<b>264</b>	<b>757</b>	<b>112</b>	<b>0</b>	<b>57</b>	<b>1190</b>	<b>1</b>	<b>61</b>	<b>1</b>	<b>0</b>	<b>-34</b>	<b>29</b>
02/29/2016	22.85%	63.99%	8.77%	0.00%	4.39%	100.00%	02/29/2016	276	773	106	0	53	1208	12	16	-6	0	-4	18
<b>03/31/2016</b>	<b>23.07%</b>	<b>59.83%</b>	<b>12.78%</b>	<b>0.00%</b>	<b>4.32%</b>	<b>100.00%</b>	<b>03/31/2016</b>	<b>278</b>	<b>766</b>	<b>109</b>	<b>0</b>	<b>52</b>	<b>1205</b>	<b>2</b>	<b>-7</b>	<b>3</b>	<b>0</b>	<b>-1</b>	<b>-3</b>
04/30/2016	23.34%	63.06%	10.40%	0.00%	3.19%	100.00%	04/30/2016	285	770	127	0	39	1221	7	4	18	0	-13	16
05/31/2016	23.41%	63.01%	9.67%	0.00%	3.90%	100.00%	05/31/2016	288	775	119	0	48	1230	3	5	-8	0	9	9
<b>06/30/2016</b>	<b>22.85%</b>	<b>63.99%</b>	<b>8.77%</b>	<b>0.00%</b>	<b>4.39%</b>	<b>100.00%</b>	<b>06/30/2016</b>	<b>269</b>	<b>783</b>	<b>128</b>	<b>0</b>	<b>45</b>	<b>1225</b>	<b>-19</b>	<b>8</b>	<b>9</b>	<b>0</b>	<b>-3</b>	<b>-5</b>
07/31/2016	21.32%	64.05%	9.97%	0.00%	4.66%	100.00%	07/31/2016	261	784	122	0	57	1224	-8	1	-6	0	12	-1
08/31/2016	21.36%	64.34%	9.94%	0.00%	4.35%	100.00%	08/31/2016	260	783	121	0	53	1217	-1	-1	-1	0	-4	-7
<b>9/30/2016</b>	<b>21.23%</b>	<b>63.85%</b>	<b>14.75%</b>	<b>0.00%</b>	<b>0.16%</b>	<b>100.00%</b>	<b>9/30/2016</b>	<b>259</b>	<b>779</b>	<b>180</b>	<b>0</b>	<b>2</b>	<b>1220</b>	<b>-1</b>	<b>-4</b>	<b>59</b>	<b>0</b>	<b>-51</b>	<b>3</b>
10/31/2016	22.29%	63.13%	14.42%	0.00%	0.16%	100.00%	10/31/2016	275	779	178	0	2	1234	16	0	-2	0	0	14
11/30/2016	21.91%	64.21%	13.88%	0.00%	0.00%	100.00%	11/30/2016	273	800	173	0	0	1246	-2	21	-5	0	-2	12
<b>12/31/2016</b>	<b>21.22%</b>	<b>64.86%</b>	<b>13.75%</b>	<b>0.00%</b>	<b>0.16%</b>	<b>100.00%</b>	<b>12/31/2016</b>	<b>267</b>	<b>816</b>	<b>173</b>	<b>0</b>	<b>2</b>	<b>1258</b>	<b>-6</b>	<b>16</b>	<b>0</b>	<b>0</b>	<b>2</b>	<b>12</b>
1/31/2017	22.50%	63.67%	13.67%	0.00%	0.16%	100.00%	1/31/2017	288	815	175	0	2	1280	21	-1	2	0	0	22
2/28/2017	23.06%	63.20%	13.59%	0.00%	0.16%	100.00%	2/28/2017	276	773	106	0	53	1208	-12	-42	-69	0	51	-72
<b>3/31/2017</b>	<b>23.04%</b>	<b>63.69%</b>	<b>13.11%</b>	<b>0.00%</b>	<b>0.16%</b>	<b>100.00%</b>	<b>3/31/2017</b>	<b>278</b>	<b>766</b>	<b>109</b>	<b>0</b>	<b>52</b>	<b>1205</b>	<b>2</b>	<b>-7</b>	<b>3</b>	<b>0</b>	<b>-1</b>	<b>-3</b>
4/30/2017	21.97%	65.38%	12.57%	0.00%	0.08%	100.00%	4/30/2017	285	848	163	0	1	1297	7	82	54	0	-51	92
5/31/2017	21.48%	65.13%	13.32%	0.00%	0.08%	100.00%	5/31/2017	279	846	173	0	1	1299	-6	-2	10	0	0	2
<b>6/30/2017</b>	<b>20.91%</b>	<b>65.82%</b>	<b>13.12%</b>	<b>0.00%</b>	<b>0.15%</b>	<b>100.00%</b>	<b>6/30/2017</b>	<b>271</b>	<b>853</b>	<b>170</b>	<b>0</b>	<b>2</b>	<b>1296</b>	<b>-8</b>	<b>7</b>	<b>-3</b>	<b>0</b>	<b>1</b>	<b>-3</b>
7/31/2017	20.91%	66.82%	12.11%	0.00%	0.16%	100.00%	7/31/2017	266	850	154	0	2	1272	-5	-3	-16	0	0	-24
8/31/2017	21.74%	67.90%	10.20%	0.00%	0.16%	100.00%	8/31/2017	277	865	130	0	2	1274	11	15	-24	0	0	2
<b>9/30/2017</b>	<b>21.24%</b>	<b>68.14%</b>	<b>10.62%</b>	<b>0.00%</b>	<b>0.00%</b>	<b>100.00%</b>	<b>9/30/2017</b>	<b>270</b>	<b>866</b>	<b>135</b>	<b>0</b>	<b>0</b>	<b>1271</b>	<b>-7</b>	<b>1</b>	<b>5</b>	<b>0</b>	<b>-2</b>	<b>-3</b>
10/31/2017	21.52%	69.15%	9.34%	0.00%	0.00%	100.00%	10/31/2017	272	874	118	0	0	1264	2	8	-17	0	0	-7
11/30/2017	21.01%	67.44%	11.39%	0.00%	0.16%	100.00%	11/30/2017	262	841	142	0	2	1247	-10	-33	24	0	2	-17
<b>12/31/2017</b>	<b>21.33%</b>	<b>67.96%</b>	<b>10.62%</b>	<b>0.00%</b>	<b>0.08%</b>	<b>100.00%</b>	<b>12/31/2017</b>	<b>263</b>	<b>838</b>	<b>131</b>	<b>0</b>	<b>1</b>	<b>1233</b>	<b>1</b>	<b>-3</b>	<b>-11</b>	<b>0</b>	<b>-1</b>	<b>-14</b>
1/31/2018	22.33%	67.64%	9.86%	0.00%	0.16%	100.00%	1/31/2018	274	830	121	0	2	1227	11	-8	-10	0	1	-6
2/28/2018	22.06%	68.04%	9.74%	0.00%	0.16%	100.00%	2/28/2018	274	845	121	0	2	1242	0	15	0	0	0	15
<b>3/31/2018</b>	<b>21.21%</b>	<b>68.31%</b>	<b>10.48%</b>	<b>0.00%</b>	<b>0.00%</b>	<b>100.00%</b>	<b>3/31/2018</b>	<b>263</b>	<b>847</b>	<b>130</b>	<b>0</b>	<b>0</b>	<b>1240</b>	<b>-11</b>	<b>2</b>	<b>9</b>	<b>0</b>	<b>-2</b>	<b>-2</b>
4/30/2018	19.31%	69.02%	11.67%	0.00%	0.00%	100.00%	4/30/2018	235	840	142	0	0	1217	-28	-7	12	0	0	-23
5/31/2018	19.33%	71.25%	9.25%	0.00%	0.17%	100.00%	5/31/2018	232	855	111	0	2	1200	-3	15	-31	0	2	-17
<b>6/30/2018</b>	<b>18.42%</b>	<b>71.22%</b>	<b>10.36%</b>	<b>0.00%</b>	<b>0.00%</b>	<b>100.00%</b>	<b>6/30/2018</b>	<b>224</b>	<b>866</b>	<b>126</b>	<b>0</b>	<b>0</b>	<b>1216</b>	<b>-8</b>	<b>11</b>	<b>15</b>	<b>0</b>	<b>-2</b>	<b>16</b>
7/31/2018	19.05%	69.97%	10.98%	0.00%	0.00%	100.00%	7/31/2018	229	841	132	0	0	1202	5	-25	6	0	0	-14
8/31/2018	18.56%	71.87%	9.57%	0.00%	0.00%	100.00%	8/31/2018	221	856	114	0	0	1191	-8	15	-18	0	0	-11
<b>9/30/2018</b>	<b>18.47%</b>	<b>68.51%</b>	<b>13.03%</b>	<b>0.00%</b>	<b>0.00%</b>	<b>100.00%</b>	<b>9/30/2018</b>	<b>224</b>	<b>831</b>	<b>158</b>	<b>0</b>	<b>0</b>	<b>1213</b>	<b>3</b>	<b>-25</b>	<b>44</b>	<b>0</b>	<b>0</b>	<b>22</b>
10/31/2018	17.58%	69.65%	12.77%	0.00%	0.00%	100.00%	10/31/2018	216	856	157	0	0	1229	-8	25	-1	0	0	16
11/30/2018	17.25%	75.16%	7.59%	0.00%	0.00%	100.00%	11/30/2018	216	941	95	0	0	1252	0	85	-62	0	0	23
<b>12/31/2018</b>	<b>17.77%</b>	<b>70.04%</b>	<b>12.19%</b>	<b>0.00%</b>	<b>0.00%</b>	<b>100.00%</b>	<b>12/31/2018</b>	<b>223</b>	<b>879</b>	<b>153</b>	<b>0</b>	<b>0</b>	<b>1255</b>	<b>7</b>	<b>-62</b>	<b>58</b>	<b>0</b>	<b>0</b>	<b>3</b>
1/31/2019	18.82%	69.26%	11.91%	0.00%	0.00%	100.00%	1/31/2019	237	872	150	0	0	1259	14	-7	-3	0	0	4
2/28/2019	18.66%	69.33%	12.02%	0.00%	0.00%	100.00%	2/28/2019	236	877	152	0	0	1265	-1	5	2	0	0	6
3/31/2019	18.56%	69.59%	11.85%	0.00%	0.00%	100.00%	3/31/2019	235	881	150	0	0	1266	-1	4	-2	0	0	1
4/30/2019	18.77%	68.69%	12.54%	0.00%	0.00%	100.00%	4/30/2019	235	860	157	0	0	1252	0	-21	7	0	0	-14
5/31/2019	20.77%	68.32%	10.91%	0.00%	0.00%	100.00%	5/31/2019	259	852	136	0	0	1247	24	-8	-21	0	0	-5

## Custody Level History by Month



## History of Custody Levels and Trend Changes

